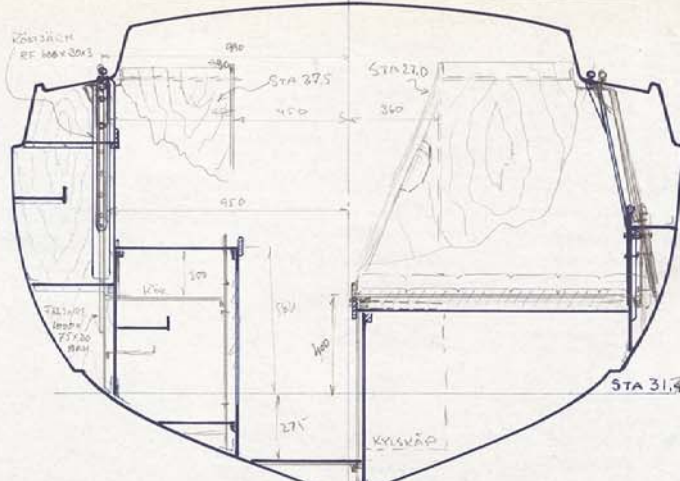
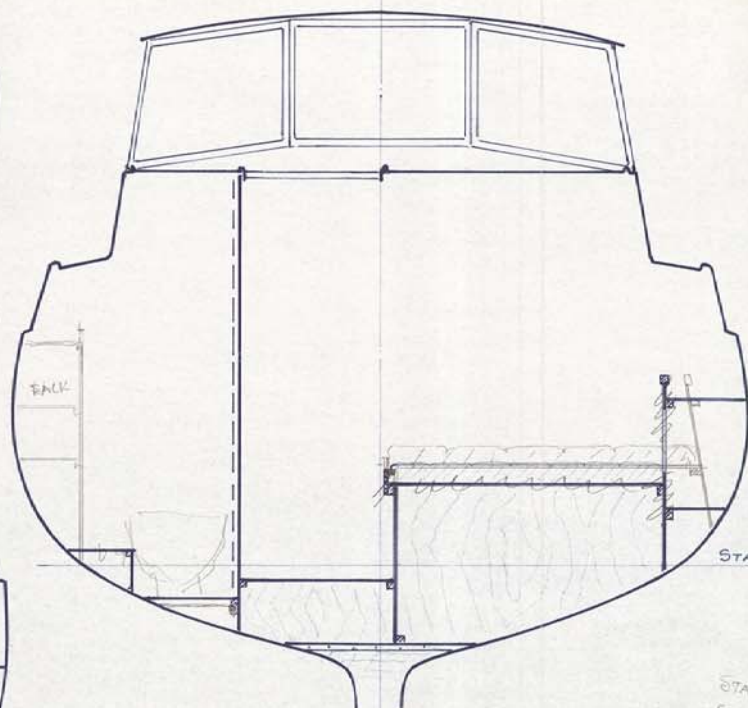


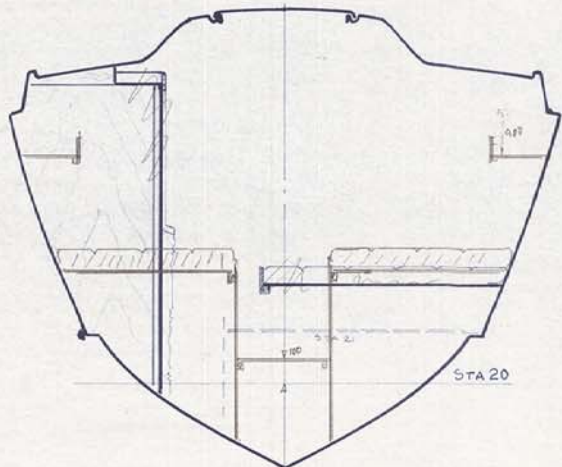
STA 25



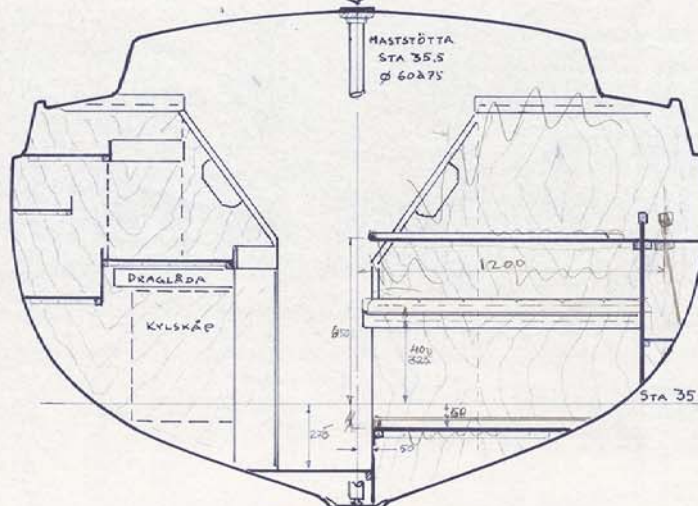
STA 31.9



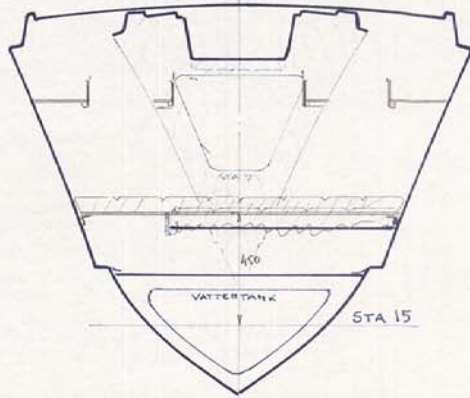
STA 45



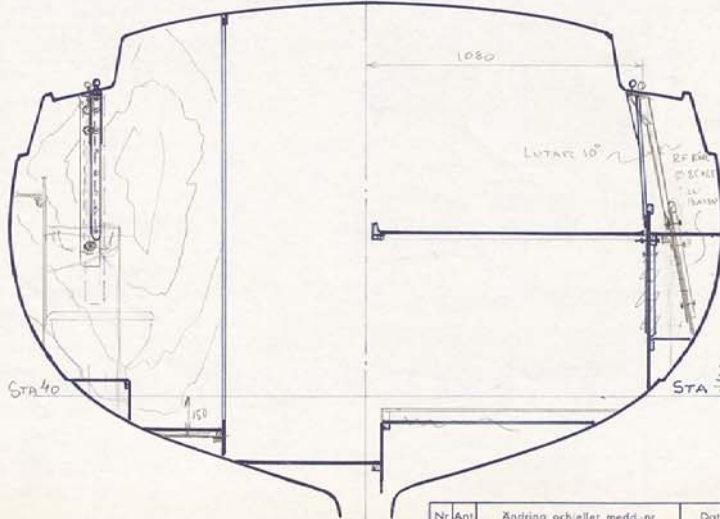
STA 20



STA 35



STA 15



STA 40

STA 38.5

STA 50
STA 60
65
70

SEKTIONERHA SÄDDA AKTERIFRÅN

| Det.-nr | Ant. | Benämning | | | Material | Mod.-nr | Ämne | Anm. | |
|---|------|-----------|--------|-------|----------|---------------------|---------|------------|------|
| Konstr. | 9.2 | Kon. | Stand. | Godk. | Skala | 1:15 | Erstär. | Erstär. av | Dat. |
| BIBRÄLLS KONSTRUKTIONSBYRÅ AB | | | | | | 8.2 M. MOTORSEGLARE | | 1974-12-11 | |
| HEMINGSRUD 547 00 GULLSPÅNG TEL. 0851/20880 | | | | | | INREDNING-SEKTIONER | | 101-7 | |

Nr Ant. Ändring och/eller medd. nr Datum Inf. Godk.